



Fri. 2014
Vol. 3

Hello! China

Guilin Travel Guidebook

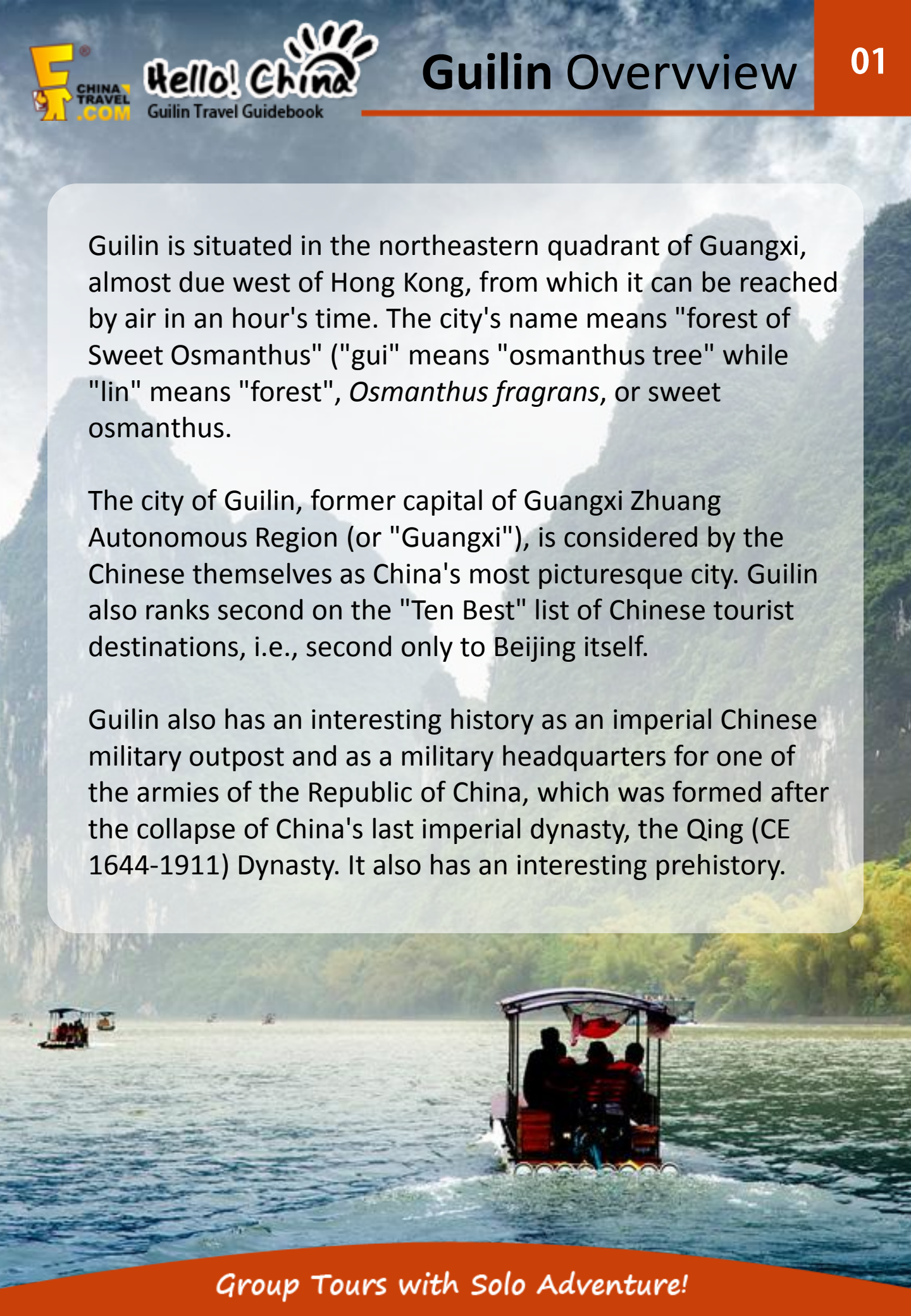


Group Tours with Solo Adventure!

Guilin is situated in the northeastern quadrant of Guangxi, almost due west of Hong Kong, from which it can be reached by air in an hour's time. The city's name means "forest of Sweet Osmanthus" ("gui" means "osmanthus tree" while "lin" means "forest", *Osmanthus fragrans*, or sweet osmanthus).

The city of Guilin, former capital of Guangxi Zhuang Autonomous Region (or "Guangxi"), is considered by the Chinese themselves as China's most picturesque city. Guilin also ranks second on the "Ten Best" list of Chinese tourist destinations, i.e., second only to Beijing itself.

Guilin also has an interesting history as an imperial Chinese military outpost and as a military headquarters for one of the armies of the Republic of China, which was formed after the collapse of China's last imperial dynasty, the Qing (CE 1644-1911) Dynasty. It also has an interesting prehistory.



Guilin is located in low latitude, enjoying subtropical monsoon climate. It has mild climate, with abundant rainfall, sufficient sunshine and ample heat. Guilin has four distinct seasons, with very long summer and short winter. The annual temperature averages at 18.9°C. The highest temperature falls in July and August, with the monthly average temperature of 28.3°C. The coldest month is January, with the monthly average temperature of 15.6°C.

Guilin is suitable for traveling all the year round, with unique natural scenery in different periods. During the rainy days, the whole of the city, including the green mountain, the beautiful rivers and the fragrant flowers are shrouded in mist, looking enchanting and mysterious.

Best Visiting Time

The best time to visit Guilin is from April to October when the weather is comfortable and the unique natural scenery is at its best. However, the peak tourist seasons, including the May Day festival (May 1st to May 3rd) and National Day festival (Oct. 1st to 7th), should be avoided, as there will be crowds of Chinese travelers during this period, causing inconvenience to transportation and accommodation, such as tickets booking and hotel reservation. Thus, tourists had better avoid these period.

The Annual Temperature

	Jan	Feb	Mar	Apr	May	Jun	Jul	Aug	Sep	Oct	Nov	Dec
High (°C)	11.7	12.8	17.2	22.8	27.8	31.1	33.3	33.3	31.1	26.1	20.6	15
Low (°C)	5.6	7.2	11.1	16.1	16.1	20.6	23.9	25.6	25	22.2	17.78	12.2
Precipitation (mm)	2.1	3.5	5.1	10.1	14.1	13.6	8.8	6.9	3.1	3.6	2.8	1.9





[Guilin](#) is well-known thanks to its unique Karst landform and as a stopping off point before visiting [Yangshuo](#) and other areas close to Guilin. Of course Yangshuo plays a key role in trip planning but other areas in around Guilin should be included in any visit. Based on our local knowledge these are the top things to do in Guilin.



Reed Flute Cave

[Reed Flute Cave](#) is the most notable cave of the many in Guilin. It is located on the side of Taohua River and about 6 km away from the city center.

Known as the Palace of Natural Arts the beautiful stalactites and stalagmites in the huge cave are let in a spectacular way to bring them to life. Each has its own story and a guide will be helpful. Allow 1 1/2 hours for a visit.

- **Add:** NO1, Ludi Road, Xiufeng District, Guilin City
- **Tel:** 0773-2695075
- **Admission:** 90 Yuan/person
- **Opening Hours:** 7:30-18:00 between Apr. 1 and Nov. 31; 8:00-17:30 for Dec.1 to Mar.31
- **Getting there:** Take Bus NOs 3/58 and get off at Ludi Yan Station (芦笛岩站)

Recommended Guilin Reed Flute Cave Tour:

- Take a [3-Day Classical Guilin Tour](#) from USD \$309



Group Tours with Solo Adventure!



Folded Brocade Hill

[Folded Brocade Hill](#) is one of the highest points overlooking the city, along with Fubo Hill and Solitary Beauty Peak. Folded Brocade Hill is special in that it provides breathtaking views at sunrise or sunset and therefore great for many photographers.

Because Folded Brocade Hill overlooks the Li River and other nearby peaks including Elephant Trunk Hill it is an excellent place to get a birds-eye view of Guilin. Pavilions from the Ming Dynasty provide a place to rest. Tree-lined paths lead to the hill top and the stone sculptures without faces are the result of the Cultural Revolution. The caves provide cool relief during summer. A 1 1/2 hour visit includes the time of the climb to the top.

- **Add:** No 2, Longzhu Road, Xiangshan District, Guilin City
- **Tel:** 0773-5635206
- **Admission:** 35 Yuan/person
- **Opening Hours:** 6:00-18:30 during Apr. 1 and Nov. 31; 6:30-18:00 from Dec.1 to Mar.31
- **Getting there:** Take Bus No. 2/58 or Tourism Bus No.1 and get off at Diecai Shan Station (叠彩山站)
- We can [customize a Guilin tour](#) for you including the Folded Brocade Hill.





Longji Terraced Fields

[Longji Terraced Scenic Areas](#) are in Longsheng County, 77 km away from Guilin. The highest point is 1,180 meters above sea level and the lowest 380 meters. The Scenic Area includes 3 main terraced fields. They are Jinkeng, Ping'An and Gu Zhuangzhai Village.

Each has its own specialty. Ping'An was the first to be developed and is also the location of the famous attraction—Seven Stars accompanying the Moon. Jinkeng is a village home to the Red Yao Ethnic group. The terraced fields are surrounded by mountains which look like a natural hole. A cable car is available at Jinkeng. The Terraced fields at Gu Zhuangzhai are dotted with ancient stilted houses and there are 7 houses over 100 years old.

Ping'an and Jinkeng are very commercial while Gu Zhuangzhai still keeps the natural appearances. 2 days hiking is recommended. May and October are the best time to visit there when offering lots of photo opportunities.

- **Add:** Longji Terraced Field Scenic Area, Longsheng County
- **Tel:** 0773-7583031
- **Admission:** 80 Yuan/person
- **Getting there:** Take a non-stop bus from Guilin to Longsheng costing 20 Yuan/person for about 1 1/2 hours.



To Dazhai(Terraced Fields in Jinkeng):

Transfer to Dazhai from Longsheng Bus Station costing 7 Yuan/person and another 1 hour.

To Ping'an Village:

Transfer to Ping'an costing 6.5 Yuan/person and another 1 hour and then walk for 20 minutes.

To Gu Zhuangzhai:

Walk to Gu zhuangzhai from Seven Star Accompanying the Moon at Ping'an for 40 minutes.

On the way to Longsheng County from Guilin, visitors can get off at Heping Village and take a car to one of these 3 villages for about 15 Yuan/person.

Recommended Guilin Reed Flute Cave Tour:

- Take a [5-Day Longsheng Hiking Trip](#) from USD \$599





Seven Star Park

Seven Stars Park is situated on the eastern side of the Li River, near the city of Guilin. It covers an area of 120 hectares and is Guilin's largest park. As such, it houses some of the finest sightseeing venues not only in the city of Guilin, but in the entire region. The major attractions of Seven Stars Park include Camel Hill, Flower Bridge, Guihai Forest of Steles, Seven Stars Cave, and Seven Stars Zoo.

- **Add: No.1** Qixing Road at the East bank of the Li River in Qixing District
- **Tel:** 0773-5812174
- **Admission: 75** Yuan/person
- **Opening Hours:** 06:00-19:30 in summer;06:30-19:00 in winter
- **Getting there:** Bus 10, 11, 14, 18, 25, 30, 31, 98 and 58 are available to Seven Star Park directly.



Elephant Trunk Hill

Elephant Trunk Hill, which gets its name from the fact that its shape suggests a huge elephant siphoning up water from the river below (the Li River), is the very symbol of the city of Guilin, and as the symbol of Guilin, it appears in books, magazines and travel brochures, as well as on TV. Elephant Trunk Hill, standing, as it were, on the west bank of the Li River, consists of other parts (including "body parts") that have further sparked the imagination of the local populace.

- **Add:** at the junction of the Li River and Peach Blossom River
- **Admission:** 75 Yuan/person
- **Opening Hours:** 07:00-21:30 from Dec. to Mar.; 06:30-21:30 from Apr. to Nov.
- **Getting there:** Bus 2, 23, 57 and 58 can reach Elephant Trunk Hill.



The Famous Li River Cruise

[Li River](#) is the main reason for people traveling to Guilin. The cruise from Guilin City to Yangshuo on the Li River is 83 km of uniquely beautiful karst landscape. Taking the Li River cruise is the best way to enjoy this natural beauty.

The peaks stretch along the river creating interesting stories, fishermen ride bamboo rafts to catch fish and each turn of the river offers a surprise to make the 4-hour cruise enjoyable. Some point of interest on Li River are:- Jiu Ma Hua Shan (Nine Horses in Mountains) and Huang Bu Dao Ying (the Reflection of Yellow Cloth) will be seen as you cruise. Cruise ships for foreign people are dock at Zhujiang Pier while the Cruise ships for Chinese visitors are dock at Mo Panshan Pier.

- **Add:** Zhujiang Pier, Yanshan District, Guilin City
- **Tel:** 0773-28-28232
- **Price:** 285 Yuan/person
- **Opening time:** 9:00-18:30
- **Getting there:** Take a taxi from the city center to Zhujiang Pier at 80 Yuan

Recommended Guilin Li River Tour:

- Take a [5-Day Natural Guilin Tour from Hong Kong](#) from USD \$599



Drifting along Yulong River

Running through the county of Yangshuo in Guilin, Yulong River is the largest branch of Li River. Over 43 kilometers long and covering an area of 158 square kilometers, it is a popular attraction among locals and foreigners who enjoy natural activities such as biking and bamboo rafting.

Endless farmlands, dramatic limestone peaks, ancient bridges, modern and ancient dams, bamboo groves and more create some fascinating scenery that leaves the visitor speechless. Although trekking and biking by the river's sides is free of charge drifting along the river on a bamboo raft is a must and is worth to pay for.

- **Add:** In yangshuo
- **Price:** 150-240yuan for a bamboo raft, each raft can seat 2 persons.
- **Opening time:** All the day
- **Getting there:** The best way is to rent a bike in Yangshuo and cycle along the river to take in the pleasant countryside scenery.



Yangshuo Countryside Cycling

Yangshuo has some of the area's most beautiful scenery and biking is a popular way to enjoy the scenery and get a close look at life in rural China. The route is about 20 km long taking in Moon Hill, passing Gong Nong Bridge and Yulong River. Bike renting is available everywhere in Yangshuo for about 20 Yuan/bike a day. When booking with chinatravel.com, a biking tour will include a local family visit to allow customers a deeper insight into the local life of the villagers.

Recommended Yangshuo Biking Tour:

- Take a [5-Day Hike and Bike Trip in Guilin](#) from USD \$559



Learning Tachi in Yangshuo

Learning Taichi can be an interesting activity for foreign people. A Taichi school in Yima Village of Yangshuo County is very popular. It is around 20 minutes from the county by bike. The school is located in an Qing Dynasty house in a beautiful setting.

Teachers are passionate but easy-going. They are happy to talk about Taichi and Chinese culture. They provide teaching at different levels and the class times are flexible according to students' requirements. Many consider it a once-in-a-lifetime experience.

- **Add:** NO 88, Yima Village, Yangshuo County
- **Getting there:** take a local electric car or rent a bike to get there for 20 minutes
- We can [customize a Guilin tour](#) for you including a Taichi lesson in Yangshuo.



Chinese Cooking Class in Yangshuo

For those who have fancy for learning how to cook authentic Chinese dishes, it's exciting to know there are some cooking schools in Yangshuo which offering Chinese cooking classes for foreigners. During the cooking class, foreigners will learn the cooking of local dishes by practice with the guidance of teachers who speak fluent English. The patient and friendly teachers will tell you the basic cooking techniques of Chinese dishes, including frying, steaming, roasting and stewing. Generally, a cooking class lasts about 3 hours, which mainly consists of four processes.

Recommended Cooking Schools in Yangshuo

Jufulou Chinese Cookery Class

- **Add:** Jufulou Reataurant, West Street, Yangshuo
- **Tel:** 0773-8813686

Yangshuo Aiyuan Hotel Cookery Class

- **Add:** Aiyuan Hotel, West Street, Yangshuo
- **Tel:** 0773-8811882; 8811868

Yangshuo Cookery School

- **Add:** near Yulong River
- **Tel:** 13788437286



Chinese Cooking Class in Cloud 9

Chinese cooking class are very popular with foreign travelers in Yangshuo. Cloud 9 Restaurant was one of the earliest and best Chinese Restaurants offering delicious local dishes, Sichuan food as well as cooking classes every day. It is conveniently located in busy West Street.

The chef not only teaches pupils how to cook but also talks about Chinese culture. Each student cooks their dishes and then enjoys their own labor by eating the result.

- **Add:** Chengzong Road, Yangshuo
- **Class time:** 9:30-11:30; 16:00-18:00
- We can [customize a Guilin tour](#) for you including a • Chinese cooking class in Yangshuo.



Mud Bath in a Water Cave

The Water Cave at Longmen Village, near Moon Hill is not a very attractive cave compared to other many caves in the area. At the end is mud bath and hot spring. In summer the mud is really cool. This is especially fun for kids and first-timers. Change rooms are available in the cave.

- **Add:** Yiling Village, Yangshuo County, Guilin City
- **Opening Hours:** 9:00-17:00
- **Admission:** 168 Yuan/person
- **Getting there:** take a local electric car or rent a bike to get there in 20 minutes
- We can [customize a Guilin tour](#) for you including the Mud Bath in a Water Cave.



Moon Hill

A visit to the Moon Hill should form an indispensable part of any Yangshuo tours. It is located 8 km away from the downtown Yangshuo County and just 1 km away from the legendary Banyan Tree. The hill, a miracle in nature, is a large piece of rock with a hole in its centre.

- **Add:** Around 8 km away from downtown Yangshuo.
- **Admission:** 15 yuan
- **Opening Hours:** 8: 00—17: 30
- **Getting there:** It is only 8 miles from Yangshuo County Center and taxis are convenient to Moon Hill.



West Street

Situated at the centre of Yangshuo, West Street is 517 meters long and 8 meters wide. The buildings in the street are traditional southern Chinese architecture. West Street combines traditional Chinese culture and modern Western elements. This street is also called a “Foreign Street” in China as there is a greater concentration of foreign travelers than usual.

It is one of the most famous global streets in China. West Street at night is a different sight. The street is jostling with visitors. Various bars, cafes, and restaurants are the highlights at night.

- **Add:** Off Putuo Road, 3 minutes’ walk from the bus station.
- **Admission:** Free
- **Opening Hours:** All day, but quiet with most places closed between about 2am and 7am.
- **Getting there:** Go to Guilin Coach Station which is a 10-minute walk from Guilin Railway Station to get a direct coach to Yangshuo. The coach to Yangshuo departs every 20 minutes from 07:00 to 18:00.

There are private buses from the railway station that stop anywhere, cost 18 yuan, and take up to 90 minutes.





Xingping Fishing Village (兴坪渔村)

For many years, this quiet but picturesque fishing village more than 20 kilometers from [Yangshuo](#) took a backseat as other Chinese provinces and cities hogged the tourism spotlight—until 1998 when the then-president Bill Clinton ended i n Xingping. Since then, the world knew, and they started pouring in.

Xingping Fishing Village is often called the Old Town—and rightfully so. It's been around for more than 500 years! (The actual Xingping town has seen multiple dynasties.) Nevertheless, it's able to retain its provincial charm and natural beauty for the newer generations to appreciate.

- **Add:** Xingping Fishing Village, Yangshuo
- **Admission:** 10 RMB as entrance fee
- **Opening Hours:** 7:00—18:30
- **Getting there:** To get to the fishing village and town, ride a bus from Yangshuo. Another option is to take a boat ride from the main port in Xing Ping, which may take around 20 minutes, depending on where you start. Since the terrain is relatively flat, one can explore using a bike or by foot.



Impression of Liusanjie

Impressions of Liu san jie is the largest show performed in natural landscape in the world. It is directed by Zhang Yimou who also directed the opening ceremony of 2008 Beijing Olympic Games. There are almost 600 actors who are all local villagers. It uses both the Li River and the bank as its stage and tells a love story of Liu Sanjie who was a very famous figure in the folklore of the area. Watching this show in this environment is considered to be an experience of a life time.

- **Add:** 1, Tianyuan Road, Yangshuo, Guilin
- **Tel:** 0773-8811 983
- **Admission:** 90 Yuan/person for March to November and 65 Yuan/person for other months.
- **Show Time:** 19:30-21:00
- **Prices:** Ordinary Seats (RMB 220), VIP 1(RMB 238), VIP2 (RMB 320), Vice president VIP A2 (RMB 480), President VIP A1 (RMB 680).

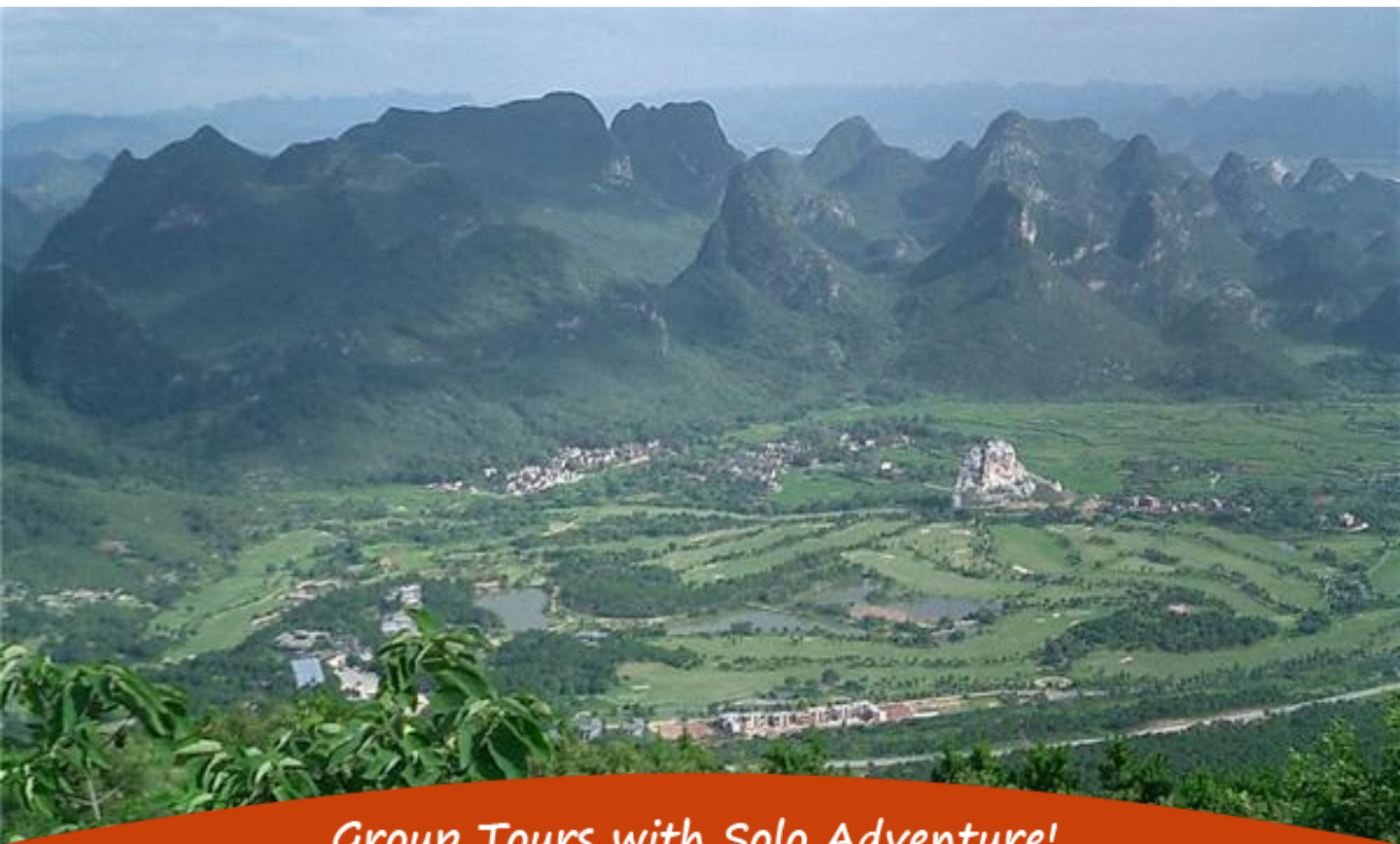
We can [customize a Guilin tour](#) for you including the Impression of Liusanjie show.



Yao Mountain (尧山)

Yaoshan Mountain lies in the east of Guilin, 12 km from downtown. It is the highest mountain in Guilin at 903.3 meters. Yaoshan Mountain received its name from a Yao emperor who built a temple at the top of this mountain in the Tang dynasty. The mountain offers different views depending on the season. During springtime, azalea flowers are everywhere. In the summer, bamboos compete with each other for greenness. In autumn the falling red maple leaves make the hill appears as though it is on fire. Winter's snow on the mountain is as transparent as pure crystal.

- **Add: Raoshan Road, Diecai District, Guilin**
- **Tel: 0773-5864592**
- **Admission: 95 yuan including cable cars on both ways**
- **Opening Hours: 09:00-16:00**
- **Getting there: Take Bus 24 and get off at the Jingjiang Mausoleum bus station.**



Guilin Merryland Park

Merryland theme park is located 73km north of Guilin city. This is the largest and most popular theme park in the Guangxi Zhuang province and attracts thousands of visitors not only from china but all over the world. It covers an area of about 90 hectares and is made up of five components. Of the five sections the theme park is the most popular among tourist due to the various exciting programs it has on offer.

- **Add:** in Xing'an town, 70 km north to Guilin.
- **Admission:** CNY110
- **Opening Hours:** 09:00 to 17:30 The park is open all year round except for New Year's Eve.
- **Getting there:** A bus leaves from the square in front of the Guilin Railway Station direct to the theme park every 1 hour. Ticket price: 12 yuan



Daxu Ancient Town

Some 25 kilometers southeast of the city of Guilin lies Ancient Daxu ("Big Market") Town. The city, situated on the east bank of the Li River, has been a busy center of trade ever since the Qin (BCE 221-207). Thirteen of the old town's shipping docks remain to this day, spread out along the city's 2 1/2-kilometer-long main street, and they bear witness to the town's former high degree of prosperity.



- **Add: Daxu Ancient Town, Guilin**
- **Admission: Free**
- **Opening Hours: 24 hours**
- **Getting there:** There are local mini-buses that service Ancient Daxu Town from Guilin's Sanliduan Square(三里店广场). The ticket price is around 10 Yuan per person.

Ling Canal

Located in the Xing'an County, some 41 miles to the northeastern direction of Guilin, Ling Canal is one of the world's most ancient integrated canals. However, that is hardly the reason why the place has turned into a tourist's spot. They are the panoramic vista, historical monuments and cultural richness that make the place a must-have in every itinerary that leads to China.



- **Add:** In Xing'an Town, 70 km north to Guilin.
- **Admission: 20 yuan**
- **Opening Hours: All the day**
- **Getting there:** Take the express bus from Guilin to Xing'an at the Guilin Bus Station. There are vehicles from the Xing'an Bus Station to the park.



Nanxishan Hill Park

Nanxishan Hill Park, with Nanxishan Hill at its core and the Nanxi River passing through, is located in south Guilin, just 1 kilometer from the railway station. Also nearby is the Guilin Art Gallery and the celebrated Heishan Botanical Garden with its many dazzling florals. April is the most beautiful time because thousands of cherry blossoms open in this period. The blossoms attract a lot of travelers and local people.

- **Add:** East to the Bayi Bridge, South Zhongshan Road
- **Admission:** 65RMB;
- **Opening Hours:** 8:30am-17:30pm
- **Getting there:** Take Bus No.11 or Free Bus No.58



Free Things to Do in Guilin

Guilin isn't like the big and bright cities of China. In fact, it's not something you can call modern. The people here still live a more laid-back and rural lifestyle. But it's this type of experience that appeals Guilin to a lot of people, especially those who have already been burned out by the hectic way of living of the city. Adding to its beauty is the fact that there are a lot of wondrous free things to do when you're in the area:

Ride a bike around Guilin

One of the best ways to explore Guilin is through a bike. You can simply rent one for a minimal fee, and you can already take it with you into the countryside, where most of the best attractions are found. The roads are not completely uneven, but they just add to the challenge and the naturalness of the experience. In the countryside, you can see quaint villages, rolling hills, and vast fields where most of the people spend their days growing their own food and tending to their animals.

There are different biking routes you can follow as well. One of the most popular is passing through Yangshuo, which then leads to Aishan Village. The entire trip can take around a couple of hours, but it's often enough to exercise those legs and be rewarded by amazing views of the sceneries.

Mingle with the local farmers

In Guilin, life is a lot simpler. There are fewer shopping centers, and ritzy dining and entertainment centers are almost unheard of. Nevertheless, you're not really here to experience those things as you can always go to Shanghai, Beijing, or even Xian. When you're in Guilin, you try to experience a completely different perspective of China—the rural life. Whether you're in biking or in walking tour, make sure that you can drop by in one of the farms and learn more about how they live their lives. They may be shy at first, but they are not selfish. They try their best to understand you, while you can always learn a few basic Chinese phrases for you to get by. Some may even try to let you experience the farm life by allowing you to plant or harvest the produce.

Go “window shopping”

Normally, when we speak of window-shopping, the first thing that comes into our minds is a shopping mall or perhaps a row of booths or stalls where you can check the goods that the fervent sellers are offering. When you're in Guilin, however, it's a totally different kind of window-shopping. Most of the street vendors are actually found along the country roads after having known that a lot of the visitors prefer to walk or ride the bike around the area. You have two options. You can take a pause and see what they have to offer, or continue to drive. If you prefer to do the former, then you should be ready to be run after by the sellers who will then think that you're interested in the goods. Overall, though, it's a fun experience, and it's a great place to buy your souvenirs.

Watch them practice taichi

The mountains and the countrysides of Guilin are a fantastic place to meditate and learn the art of tai-chi. It's a kind of martial arts that promotes the proper flow of energy in the body. Tai-chi has been known to improve the versatility, agility, flexibility, and mindfulness of the person. It can also enhance the immune system. There are a lot of training schools found in Yangshuo, and a typical class can last for about 2 hours. You are always free to join any class for a fee, or you can just watch them first and determine if it's something that you want to learn while you're still in Guilin.

Hike

Do you have strong legs? Would you like a more immersive experience when you're in Guilin? Then you can try hiking. Like when you're biking, there are many different routes or paths that you can follow. One of the most well-known is walking through the Li River where you can see the mountains on the sides and the peacefulness of the river right across you. The walk is pretty straightforward, and a walk toward Xingping via Yangdi may take around 6 hours the most. Along the way, you can pass by small villages, and if you're lucky, some of the residents may invite you for lunch, so you can have the meals free. The best time to hike or bike is during the autumn, since the weather's temperature is often cooler.

Ride a bike around Guilin

One of the best ways to explore Guilin is through a bike. You can simply rent one for a minimal fee, and you can already take it with you into the countryside, where most of the best attractions are found. The roads are not completely uneven, but they just add to the challenge and the naturalness of the experience. In the countryside, you can see quaint villages, rolling hills, and vast fields where most of the people spend their days growing their own food and tending to their animals.

There are different biking routes you can follow as well. One of the most popular is passing through Yangshuo, which then leads to Aishan Village. The entire trip can take around a couple of hours, but it's often enough to exercise those legs and be rewarded by amazing views of the sceneries.

Take some photographs

Most of the people say, “When you visit a place, you leave nothing but footprints.” We’re going to revise that a bit. You leave nothing but footprints and photographs. Guilin is one of the most favorite places for photographers simply because it’s radiant with colors, especially during the spring and fall. When you’re in the area, therefore, make sure that you don’t forget to bring along a camera. Don’t forget to take some photos of the karst landscapes, river banks, and parks. You can even take a lovely photo of the Li River.

Join the cormorant fishing

Have you ever seen cormorants fishing? You can definitely find them when you’re in Guilin. Granted, this experience usually comes with a price tag, particularly if you’re interested in taking pictures of the method. However, you can begin your trek very early in the morning, when there’s hardly any other tourist around, and avoid taking photos for a while. Instead, relish the experience.

Anyway, what happens during cormorant fishing? A water bird known as cormorant is trained by the fisherman to capture fish. Unlike the regular fisherfolk, this fish is a lot faster and more agile as they can take a dive deep into the waters. The fisherman and the cormorant are often found floating over a bamboo raft.

Guilin Food

Guilin food is a mixture of Cantonese cuisine and Hunan-style cuisine. The food in Guilin has a sour and spicy flavor. Sugar and peppers are widely used into a lot of dishes while the spicy flavor is delicate. Food in Guilin is mainly adopted the Stir-frying and steaming cook ways. Fish and rice noodles play an important role in people’s life in Guilin.



i Guilin Rice Noodles (桂林米粉)

Guilin rice noodles (Guilin Mifen) are the most famous and popular local staples. Usually, people in Guilin tend to eat it in the morning. Guilin Rice Noodles are consisted of fresh rice noodles, gravy, meat and fried soybeans or peanuts. Scallion in pieces, chili, and pickled condiments such as pickled bamboo or beans with a spicy taste are added into the rice noodles depending on people's tastes. Horseflesh rice noodles is the most special rice noodles among the rice noodles. Guilin rice noodles are a cheap and delicious staple.



i Casserole meal (砂锅饭)

Casserole meal (Shaguofan in Chinese) is a very common meal for an ordinary person in Guilin. There are several eating styles of casserole meals. One is that the rice is well cooked in the casserole and people can order the cooked vegetables and meat. There is another option that people go to the restaurants and order the uncooked meat, then the restaurants start to cook the polished rice and the meat people ordered. This Casserole meal takes a longer time.



i Oil-tea (油茶)


Oil-tea is a specialty in Guilin loved by the ethnic minorities including Miao, Yao and Dong in this area. Gongcheng (a county in Guilin) oil-tea is the most famous one in Guilin. The oil-tea is consisted of some spices, frying tea leaves and water which has a medical function. People like to drink the oil-tea and eat cereal ball in the morning.



 **Yangshuo beer fish (Yangshuo Pijiu Yu)**

Yangshuo beer fish is an authentic Guilin dish which is famous at home and abroad. The fish for this meal is caught from the clear Li River. The fish and fresh vegetables are cooked with beer which is brewed by local people. Although the delicious dish is with bones, it comes up to people's must-eat list in Yangshuo.



 **Lipu steamed Pork with Taro (Lipu Yutou Kourou)**

Lipu steamed pork with Taro is a well-known Guilin traditional dish which is usually served at important celebrations such as weddings. This dish is composed of streaky pork with skin and taro. The cooked streaky pork and taro are steamed with some condiments such as chill sauce, sugar, wine.



 **Steamed Li River Fish (Qingzheng Lijiang Yu)**

The fish from the Li River is famous for its tenderness. This dish is adopted steam cooking style to maintain its tenderness. To eat with a special sweet sauce can make the steamed fish more delicious.



 **Stuffed Li River Snails (Yangshuo Niang Tianluo)**

Stuffed Li River Snails is consisted of fresh snail meat, chopped pork with some sauces. The mix meat tastes a delicate spicy.



 **Stewed Duck with Gingko (Baiguo Dun Ya)**

It is a common home-made dish in Guilin while it is still popular in the restaurants. The old duck and gingko (baiguo) are rich with nutrition. This soup also has a medicinal function. Stewed Duck with Gingko perfectly has a nice fragrant of the gingko and tastes delicious.



 **Stewed Chicken and Gecko (Gejie Dun Quanji)**

A whole young chicken, two fresh geckos and some ham with a few lichees compose the precious dish in Guilin. The Gecko is quite difficult to get which makes the dish more valuable.



Mcfound(麦香坊)

Mcfound is a local restaurant offering typical Chinese northern food. This means that wheat products are more often used instead of rice which is typical in the south. There are 4 locations in Guilin and many locals are regulars. The ambience is good and the service is friendly. Most staff cannot speak English so that foreigners have to order by pointing to different pictures on the menu which are in English. Dishes offered include dumplings, black-pepper flavored fried noodles, pork with bean sauce, chili beef and pancake dishes.

- **Add:** NO.7 Xinyi Road, Guilin 桂林市信义路7号
- **Tel:** 0773-5832926
- **Opening Hours:** 11am to 2pm; 5pm to 9pm
- **Price range:** 60 Yuan/person
- **Getting there:** Take Bus No.22 at bus stop of Guilin Coach Station and get off at Children's Palace Station(少年宫站), then walk about 100 yards for the restaurant; Take Tourism Bus NO 1 or Bus NO 5 and get off at Nanmen Bridge Station(南门桥站), then walk for another 711 yards.

Little Italian 唐纳德 Café

Little Italian on Binjiang Road along the Li River in the city center attracts many foreigners. The friendly staff could speak English. This small restaurant has good pizza, Spaghetti Bolognese and pasta. Coffee, beer and desserts are also available.

- **Add:** 18 Binjiang Road, Guilin
- **Tel:** 0773-3111068
- **Opening Hours:** 10:00-23:30
- **Price range:** 100 Yuan/person
- **Getting there:** Take Bus NO 2 and get off at Jie Fangjiao Station (解放桥站).



Kali Mirch (black pepper) Indian Cuisine (黑胡椒印度餐厅)

This Indian Restaurant is situated in Shanghai Shui Street. It has a capacity of about 30 people.

The chef is from India and uses imported the raw materials. The staff speak good English. They feature samosas, garlic naan and there disks dishes.

- **Add:** No.15 bin jiang street zhengyang pedestrian street, Guilin
- **Tel:** 13737396451
- **Opening Hours:** 11:30-22:30
- **Price range:** \$7 - \$12
- **Getting there:** Bus NOs 2/100/10/30/14 reach bus stops near Zhengyang Pedestrian Street



Street (Guilin Folk Culture Shopping Street) (尚水街)

Shangshui Street is a newly-developed part of the Zhengyang Pedestrian Street in Guilin which in the center of the city. The buildings in the street are built in northern Guilin style. It is popular for snacks from all over China at moderate prices as well as some foreign foods.

- **Add:** Near the Drum Tower, Zhengyang Pedestrian Street, Guilin City
- **Tel:** 0773-2818881
- **Opening Hours:** 10:00-23:00
- **Getting there:** Bus NOs 2/57/100/10/30/14 reach stations near Zhengyang Pedestrian Street



Guilin Transport



Guilin Liangjiang Airport

The Guilin Liangjiang International Airport is the main airport that serves the city of Guilin, which is part of the Guangxi Zhuang Autonomous Region in China. The airport is located in Liangjiang, hence its name, and is about 28 kilometers or 17.4 miles to the southwest of the city center.

The Guilin Liangjiang International Airport was considered as the 29th busiest airport in China in 2010. It logged over 5 million passengers for that year alone. It has therefore gone a long way from its humble beginnings back in 1996. Another proof of its progress is its 4D flight area, which was added to its long list of facilities.

Airport code: KWL

Chinese name: 桂林两江国际机场

Address: Liangjiang Town, Lingui County, Guilin City

Airline schedule inquiry contact no.: +86-773-384 3936, 380 8888

Airport inquiry contact no.: +86-773-284 5114

Airport ticket office: +86-773-284 5297

Airport complaint contact no.: +86-773-283 4067

The KWL airport currently serves 48 air routes, domestic and international flights combined. These routes travel to over 30 domestic locations and 8 international destinations. All flights are served from one two-storey 50,000 square meter terminal building.





Guilin Liangjiang Airport

Its domestic destinations include:

Shanghai, Xian, Beijing, Guangzhou, Shenzhen, Huangshan, Zhuhai, Nanning, Chongqing, Ningbo, Chengdu, Tianjin, Wenzhou, Hangzhou, Beihai, Urumqi, Shantou, Xiamen, Haikou, Kunming, Fuzhou, Zhengzhou, Guiyang, Changsha, Dalian, Hefei, Wuhan, Jinan

International flights coming from Guilin is very limited. Currently, there are only 5 international routes, including:

- Hong Kong
- Macau
- Japan (Fukuoka)
- Thailand (Bangkok)
- Korea (Seoul)

Those who wish to proceed to onward overseas destinations may take succeeding flights in Beijing, Shanghai, and Hong Kong.



Shuttle Bus

Airport shuttle buses ply the airport to downtown route regularly; some have a fixed schedule, some does not. One scheduled shuttle bus service leaves the airport from the CAAC building (also known as the Civil Aviation Mansion) at No. 18 Shanghai Road, Xiangshan District every 30 minutes from 6:30 am to 9:00 pm. The total fare is around CNY 20. The airport bus waits at the exit of the arrival hall.

If you are coming from the city center, you can take the airport shuttle bus between 6:30 and 20:00; the shuttle sbuses leave every 30 minutes. However, to provide ample time for check-in procedures, be ure to take the bus two hours before your flights.

Note, however, that shuttle buses make several stops along the way, so they are not the most recommended form of transportation for those who are in a hurry. Also, if you are headed downtown, make sure you wait until the last stop before you get off. Some major hotels offer shuttle bus service to and from the airport. If you have already booked a room in a major hotel, check to see whether they offer complimentary airport transfers.



Taxi

The Guilin Liangjiang International Airport is just 30 kilometers west of the city. The fastest way to get there is by taking a taxi; the trip will take about 40 minutes and will cost about CNY 60 to 100. Some drivers do not speak English, so you may want to bring directions in Chinese:

Please drive me to Guilin Liangjiang Airport, thank you!

请送我到 桂林两江机场，谢谢

In general, taxi fare in Guilin is CNY 7 for the first 2 kilometers or 1.2 miles and 1.6 yuan for every kilometer thereafter. After 23:00, however, the flat fares increase to CNY 7.8 for the first 2 kilometers and CNY 1.8 to 2.4 per succeeding kilometer.

Since the Guilin Liangjiang International Airport is a busy area, it is not hard to hail a taxi from there.





Inter-City Transportation

If you are moving on to Yangshuo, which lies to the south of Guilin, or to Longsheng, which is to the north, there are convenient transportation options as well. Since there is no airport in Yangshuo, many people pass through Guilin airport to get to neighboring areas.

To get to Yangshuo, you can choose to go either by boat or by taxi. However, the most affordable option is to take inter-city buses. Unfortunately, there are no buses that go directly between Yangshou and the Guilin airport yet, so you can take an airport shuttle bus and take an Express Bus or Tourism Boat going to Yangshuo.

The Express Bus going to Yangshuo usually wait near the South Railway Station, which is the second stop of the airport bus going from the Guilin airport. You have two other options, though; you can also take a bus going to downtown Guilin then take a bus to Yangshuo from there, or you can take a bus to the Chief Bus Station and take a coach bus to Yangzhuo from there.

If you are going to Longsheng, you also need to get down at the second stop of the airport shuttle, then take a bus to Longsheng from there. Both trips take about 2 hours.

Buses going to Yangshuo leave the South Railway Station every 15 to 20 minutes from 6:00 to 22:00 and the Chief Bus Station every 15 to 20 minutes between 7:00 and 18:00. The fare for a trip to Yangshuo is about CNY 12 to 14 for each person, depending on where you are coming from; tickets should be bought prior to getting on the buses.

Train

Guilin is also serviced by a train route. There are two stations in Guilin, South Railway Station and North Railway Station. As the railroad hub in Central China, an abundant number of trains arrive and depart at both stations every day. There are bus stops near both stations, so it is easy to get to the airport from the stations and vice versa.



Cruise Ship

If you have ample time and you want to enjoy some sights on the way, you can also take a cruise ship going to Yangshuo. From the airport, you can take a taxi going to Zhujiang Dock, where the cruise ships wait for passengers.

The journey to Yangshuo takes 54 kilometers or about 34 miles. The cruise ships set off at 9:00 and 9:30 in the morning and will travel for about 4 hours before arriving at Yangshuo. You will, however, be able to enjoy picturesque scenery on the way.



A man and a woman are shown from the back, walking on a city street. They are both holding several shopping bags. The man is wearing a white t-shirt and dark pants, and the woman is wearing a grey top and a long skirt. They are looking towards the right. In the background, there are tall buildings and a blue sky with some clouds.

Guilin Shopping

Guilin Local Products:

The lovely tourist city Guilin is able to offer you a unique and interesting shopping experience with its numerous small streets, flea markets.

Lapidarist Painting

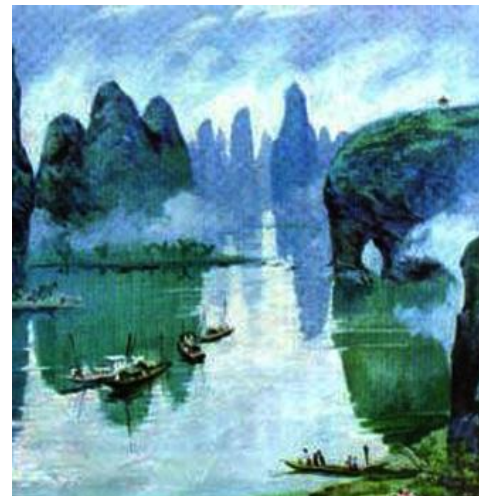
Lapidarist Painting combines Lapidarist and painting skills. Using various gems of different colors as the raw material; through cutting and polishing, the gems retain their original luster. By integrating the skills of Chinese and western painting and on the basis of the different shapes of gems, the art work successfully reflects the images of mountains, rivers, birds, flowers, and social customs. There are varied styles and patterns, such as tank, tray, vase, and folding screen. Paintings on [More Details](#)



Landscape Painting

Guilin with its superlative natural scenery has inspired generations of Chinese painters to create their masterpieces. Guilin has been a hub for great painters over centuries and many of China's prominent painters have visited Guilin to express their feelings through their art. This is the reason that Guilin has exhibits of some of China's most renowned artists.

[More Details](#)



Bamboo Carving

Bamboo carving usually uses the natural blue bamboo or boxwood as material. It reflects Chinese painting skills through thread carving, relief, and hollow out carving on different topics such as mountains, rivers, gardens, birds, flowers, and human figures. The large variety of items carved include tea caddy, vase, pencil vase, smoking set, bamboo chopsticks, bamboo crabstick, and folding screen, etc. Bamboo Carving is well known for its precise carving technique, remote artistic concept, and [More Details](#)



Painted Fans

Painted fans are delightfully delicate and colorful. The fans are available in various sizes but all are made with either silk or paper with bamboo as the fan support. The manufacturing process for a painted fan includes dyeing, mounting and painting with lacquer before it is ready for retail. Local painters in Yangshuo particularly enjoy depicting birds, flowers, insects and traditional Chinese girls. These fans are widely available in Yangshuo and Guilin and in many of the boutiques in [More Details](#)



Paper Umbrellas

Guilin has a history of 400 years of making paper umbrellas, which fall into two varieties, oil and colorful umbrellas. Paper umbrellas made in Guilin are made in the traditional style and are very elegant with beautiful designs and various styles. The paper umbrella may serve as a good gift.



Guilin Shops and Stores:

Guilin Xicheng Road Night Market (桂林西城路夜市)

Introduction: Guilin night market is located in Zhongshan Road, which is one of the top places for tourists to buy characteristic goods of Guilin, integrating relaxation, entertainment and shopping. Every day, when the night approaches and the streetlamps begin to light, there are a large number of vendors in the night market, selling a variety of goods, such as local snacks, famous local specialties, characteristic souvenirs, ornaments and handicrafts. Besides, walking in the night market and [More Details](#)



Zhengyang Walking Street (正阳步行街)

Introduction: Zhengyang Walking Street, situated in the ancient Zhengyang Road with a long history of thousands of years, is 500 meters away from Zhongshan Middle Road. As the street was a main road for the noblemen and princes in the Ming Dynasty, it is called Zhengyang Walking Street. Zhengyang Walking Street is a new tourist spot with both commerce and tourism value. It is in the center of the city, with Li River to its east, Center Square to its west, Fir Lake to its south and Prince City

[More Details](#)



Pearl Culture Shop in Guilin

Guilin Pearl Culture Shop is located on the south of the Reed Flute Cave which is honored as palaces of Nature's art, covering an area of about 10,000 square meters. It's a branch enterprise of China Southern Pearl Group, which exhibits and sells pearl products. China Southern Pearl Group is a large state-owned enterprise specializing in pearl research, pearl culture, pearl processing and pearl sale. In order to carry forward the brilliant Chinese culture, Guilin Pearl Culture Shop provides

[More Details](#)



Tea Plantation in Yaoshan Mountain Scenic Area (尧山茶园)

The Tea Plantation is located near the hill foot of Yaoshan Mountain. This free attraction provides an insight into the growing and production of many categories of tea - from white to green and black tea. A tea tasting is available. It is possible to buy samples of the many type of tea (including flavored teas) produced on sight. It is located at 17, Jinji Road, Diecai District.



Guilin Shops and Stores:

Niko Niko Do (桂林微笑堂商厦)

Introduction: Niko Niko Do is situated in Zhongshan Middle Road, Xiufeng District, which is the thriving commercial center of Guilin City with convenient traffic, covering the gross floor area of 51,000 square meters. Niko Niko Do is the only large-scale integrated Sino-Japan Joint Venture approved by the State Council in Guangxi at present, integrating retail, entertainment, and food catering service. There are approximately 50,000 varieties of commodities in Niko Niko Do, including food, clothes,

[More Details](#)

Guilin Lianda Commercial Plaza (桂林联达广场)

Introduction Lianda Commercial Plaza, located in Xiangshan District of Guilin City and covering the gross floor area of 90,000 square meters, is the first Disney-esque shopping mall with garden landscape in China, integrating shopping, relaxing, entertainment and food catering. The whole shopping mall consists of five parts, including the happy home, Provencal theme store, the base of challenge, the out street and 1001 paradise. The happy home offers a convenient shopping environment with large-scale

[More Details](#)

Guilin Lequn Market (桂林乐群市场)

Food markets are the most suitable places to experience and know about the daily life of traditional Chinese people. In the markets, people can get a variety of food, daily necessities and all kinds of ingredients for meals with the relatively low price, such as fresh vegetables, fruits, meat and live poultry. Tourists can enjoy themselves by walking through different kinds of food market and bargaining with vendors. There are a great variety of food markets of different sizes in the streets

[More Details](#)



Top 10 Hotels in Guilin

Club Med, Guilin (5-star)

Club Med resorts are known internationally for their excellent locations and accommodations. They have just recently opened a resort in Guilin, and the site has been named a World Heritage Site by UNESCO. The hotel itself is shaped like a pyramid with spacious and festively decorated rooms. What most people pay for when they are here, though, are the sports and wellness facilities, and the grand view of the rice fields. The Guilin resort offers a variety of packages for different types of groups, and it's easy to [book online](#).

- **Address:** Yuzi Paradise, Dabu Town, Yashan District, Guilin
- **Tel:** 86-773-225-5000 / 886-773-225-5222

Shangri-la Hotel, Guilin (5-star)

Thanks to its strategic location, the Shangri-la Hotel offers an unprecedented view of the Li River. It's a 35-minute-drive from the Guilin Lianjiang International Airport, and a 10-minute drive to both the city center and Deicai Hill. The hotel is designed to look like an ancient Chinese Temple, and the service is warm. Guests can enjoy spacious rooms with floor-to-ceiling windows offering views of either the Li River or the hotel's lush gardens.

- **Address:** 111 Huan Cheng Bei Er Lu, Guilin, Guangxi, 541004, China
- **Tel:** 86-773-2698888

Guilinyi Royal Palace (4-star)

Located at the Central Park of Guilin, this hotel lets guests enjoy an unrivaled view of the city's biggest botanical garden. Only a 30-minute-drive from the Guilin Lianjiang International Airport, it is also close to TOO Commercial Plaza and the 101 pleasure ground. Most guests stay in Guilinyi Royal Palace because they're attracted by the marriage of Tang Dynasty architecture with today's modern conveniences.

- **Address:** No. 117 West Ring Road, Guilin China 541002
- **Tel:** 86-773-2586888

Li Jiang Waterfall Hotel (5-star)

This is a great hotel for guests who want modern amenities but would also like to be surrounded by nature. Only 25 km from the airport, this hotel, which seems very rigid and straightforward from the outside, is fronted by glittering Shanhu Lake. To its east flows the Li Jiang River, and its south side faces the Elephant Trunk Hill. The facilities of its somewhat Spartan rooms are standard to most five-star hotels, but what impresses guests the most are the hotel's unrivaled Guilin views.

- **Address:** No. 1 North Shanhu Road Guilin China 541001
- **Tel:** 86-773-2822881 / 86-773-2823050

Sheraton Guilin Hotel (5-star)

This hotel has been in Guilin since 1988, but it was recently refurbished to keep up with its five-star standards. It sits along the western bank of the Li River and is one of the best hotels to stay in if you would like to invest in a good view. It is also close to tourist spots like the Elephant Trunk Hill, the Center Square, and the "Two Tower" Lake.

- **Address:** 15 Bin Jiang Nan Road, Guilin, China
- **Tel:** 86-21-63223855

Guilin Bravo Hotel(4-star)

This 4-star hotel gives you value for your money thanks to its location. It sits at the center of the city and is only 1.5 km away from the railway. This gives you easy access to Guilin's primary attractions. This hotel is also accessible to the handicapped.

- **Address:** 14 South Ronghu Road, Guilin, China, 541001
- **Tel:** 86-773-2898888

Guilin Park Hotel (4-star)

This hotel is located between the Lake Guihu and the Mount Laoren at the heart of Guilin. The hotel's prime location allows guests to enjoy some of the best views of the Diecai Hill, the Fubo Hill and the Duxiu peak. The interiors embody sophistication with modern amenities blending with just a tinge of Chinese culture. There are function rooms for banquets, venues for meetings, and in-house restaurants offering Class A local and western dishes.

- **Address:** No. 1 Luosi Hill, Guilin, China
- **Tel:** 86-773-2552135/86-773-2552136

Sapphire Hotel (4-star)

Designed mainly as a business hotel, the Sapphire Hotel sits right at the heart of Xicheng Pedestrian Street. This doesn't mean that the hotel is all about business though. It still offers a great view of the Taohua River, Elephant Trunk Hill, and the Ronghu Lake. In fact, it's a short walking distance to these three attractions. If guests would like to dodge the traffic in Guilin, the railroad is only 1.5 km away.

- **Address:** 9 Xicheng Street (Xicheng Lu) Southern Guilin, Guangxi China
- **Tel:** 86-773-2863388

Grand Link Hotel Guilin (4-star)

Grand Link Hotel shares the majestic view of Guilin with a host of other hotels in the area, but it is closest to the Elephant Trunk Hill. It is also very close to the Zizhou Park and Seven Star Park. There are in-house restaurants offering Japanese, Chinese and Western cuisines, and amenities for both business and leisure travelers. Their health and fitness facilities are excellent, and there are function rooms for banquets and other events.

- **Address:** No.42 Chuanshan Road, Guilin
- **Tel:** 86-773-5638888

Jing Guan Ming Lou Holiday Hotel

Located at the southern bank of the Ronghu Lake, this hotel is very close to the Xiangshan Park, the West Side Food Street and the city's business center. Also called a museum hotel, it has a collection chamber which holds some of Guilin's most precious historical remnants. The hotel is also lauded for its viewing deck which is the best vantage of the two rivers and the four lakes. The setting is intimate, and there are only 21 guest rooms, all facing the lake.

- **Address:** No. 9 South Ronghu Road, Guilin China, 541001
- **Tel:** 86-773-2898888



Guilin Tours



Group Tours with Solo Adventure!

[3 Day Classical Guilin Tour](#) from **USD \$399**

East or west, Guilin scenery is the best! This 3-day Guilin tour package allows you to relax on a Li River cruise and get deep into the Reed Flute Cave and view the Elephant Trunk Hill.

Day 1: Reed Flute Cave, Elephant Trunk Hill and Fubo Hill

Day 2: Li River Cruise to Yangshuo, West Street and land transfer

Day 3: Free time in Guilin and transfer to the airport

[4 Day Guilin, Yangshuo and Longsheng Tour](#) from **USD \$619**

Packing up Guilin, Yangshuo and Longsheng in this 4-day Guilin tour, you will visit the highlights including the Elephant Trunk Hill, Li River and Longji Rice Terrace.

Day 1: Airport - hotel transfer

Day 2: Li River Cruise

Day 3: Land transfer and Longji Rice Terrace

Day 4: Elephant Trunk Hill, Reed Flute Cave, Fubo Hill, a pearl store and transfer to the airport

